

Work Smart - Not Hard with a Blue Giant Lift Table

Common Structural & Design Features

Every Blue Giant Lift Table is manufactured to the highest ANSI standards and designed with dedicated attention to operator use and safety.

- UL/CSA approved motor and electrical components.
- Velocity fuses on each cylinder to prevent platform free-fall for added operator safety.
- Remote power pack is factory tested and prewired complete with NEMA standard hand held push button control.
- All blue giant Lift Tables have scissor legs made of solid plate steel for maximum rigidity.
- Reliable Blue giant lift cylinders provide years of trouble free operation. A hard chrome ram and self adjusting polyurethane seals assure long life and reduced maintenance.
- Pivot points are fitted with life-time lubricated bearings or teflon coated bushings to ensure smooth, maintenance free operation.
- Hard chromed pivot pins are further evidence of the quality built into each lift table.
- Heavy duty torque tubes join the solid steel plate scissor legs assuring ultimate rigidity over full range of travel.
- Unique center ram thrust brackets designed to geometrically give best possible lifting capacity.
- The smooth deck plate is heavily reinforced including the peripheral members that are welded as a one piece platform to meet/exceed rated capacities.
- Electrical trip bar is mounted on all four sides of the table, stopping the downward travel of the unit upon contact with an obstruction. A recommended option for all open and pit installed units.



Work Safe

Eliminate the need to bend, twist and pick up heavy loads manually. Let Blue Giant Lift Tables increase productivity and decrease costly injuries caused by overexertion and personal handling of materials. Did you know over 30% of all reported accidents are through manual handling of loads? The high costs of insurance and compensation resulting from back strain and employee injury further prohibit the personal handling of products in most industrial applications.

A labor saving and efficient Blue Giant Lift Table can pay for itself in only a matter of months when used as a work station in conjunction with an assembly or conveyor line operation. Whether a standard model or custom design is required for your application. Blue Giant Lift Tables are the safe and reliable solution.

Existing OSHA (Occupational Safety & Health Administration) regulations require employers to:

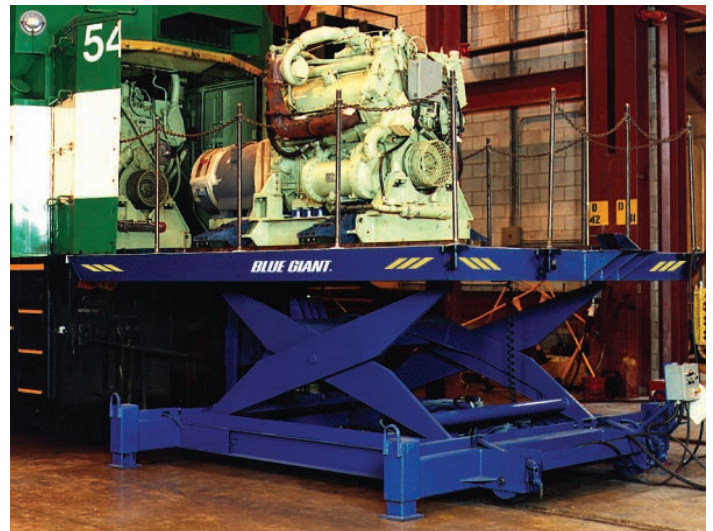
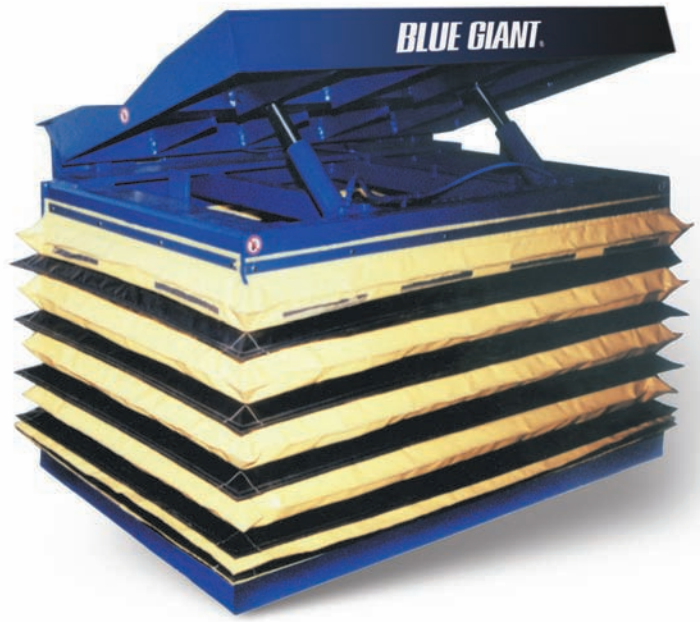
- AVOID the need for hazardous manual handling as far as reasonably practicable.
- Reduce the risk of injury from hazardous manual handling as far as reasonably practicable.
- ASSESS the risk of injury from any hazardous manual handling that can't be avoided.
- Limit lifting at 50 lbs (23 kg) maximum for men and 35 lbs (16kg) maximum for women.

Ergonomics

"The science of adapting work or working conditions to suit the employee."

Options

- Custom sizes and designs.
- Lips or bridge plates.
- Electrical trip bars.
- Self-contained or larger HP power packs.
- Foot pedal control.
- Guard rails.
- Checker deck surfaces.
- Up-travel limit switch.
- Portable wheels.
- Accordion safety skirting.
- Rotating tops.
- Conveyor tops.
- Tilt tops.
- Consult factory for additional options.



Standard Model Selection Chart

	DECK DESIGN		STANDARD DECK SIZE (W x L)*	CAPACITIES (lb)**											LOWERED HEIGHT (A)	VERTICAL TRAVEL (B)	RAISED HEIGHT (C)		
	Standard	Optional		1000	2000	3000	4000	5000	6000	8000	10000	12000	15000	20000					
FS SERIES	Style 1	-	18" x 42"	.	.											8"	28"	36"	
			18" x 48"	.	.													32"	40"
			24" x 48"											32"	40"
	Style 2	-	30" x 48"											32"	40"
			32" x 60"								34"	42"	
			36" x 60"								34"	42"	
			36" x 72"								42"	50"	
			42" x 60"								34"	42"	
			42" x 72"								42"	50"	
			48" x 60"								34"	42"	
	Style 1	-	48" x 72"										42"	50"
			42" x 60"							.	.							36"	48"
			48" x 60"								.	.						36"	48"
	Style 3	Style 2	48" x 72"								.	.						44"	56"
			48" x 84"								44"	56"
			48" x 96"								48"	60"
			48" x 108"								53"	65"
			48" x 120"								60"	72"
			60" x 84"								68"	80"
60" x 96"									48"	60"		
60" x 108"									53"	65"		
60" x 120"									60"	72"		
72" x 96"									68"	80"		
72" x 108"									53"	65"		
72" x 120"									60"	72"		
72" x 144"									68"	80"		
84" x 96"									72"	84"		
84" x 108"									53"	65"		
84" x 120"									60"	72"		
84" x 144"									68"	80"		
Style 1			-	48" x 84"								.						48"	62"
	48" x 96"										.					53"	67"		
	48" x 108"										.					60"	74"		
Style 3	Style 2	48" x 120"									.					68"	82"		
		60" x 84"									.	.				48"	62"		
		60" x 96"										.	.			53"	67"		
		60" x 108"										.	.			60"	74"		
		60" x 120"										.	.			68"	82"		
		72" x 96"										.	.			53"	67"		
		72" x 108"										.	.			60"	74"		
		72" x 120"										.	.			68"	82"		
		72" x 144"										.	.			78"	92"		
Style 3	Style 2	84" x 96"									.	.				53"	67"		
		84" x 108"									.	.				60"	74"		
		84" x 120"										.	.			68"	82"		
		84" x 144"										.	.			78"	92"		
		60" x 96"											.	.		44"	65"		
		60" x 108"											.	.		50"	71"		
		60" x 120"											.	.		56"	77"		
		72" x 96"											.	.		44"	65"		
		72" x 108"											.	.		50"	71"		
DS SERIES	Style 1	-	72" x 120"										.	.		56"	77"		
			72" x 144"										.	.		58"	79"		
			84" x 96"											.	.		44"	65"	
			84" x 108"											.	.		50"	71"	
			84" x 120"											.	.		56"	77"	
			84" x 144"											.	.		58"	79"	
			24" x 48"										48"	60"	
			24" x 60"										60"	72"	
			24" x 72"										72"	84"	
			30" x 48"										48"	60"	
			30" x 60"										60"	72"	
			30" x 72"										72"	84"	
			36" x 48"										48"	60"	
36" x 60"										60"	72"				
36" x 72"										72"	84"				
42" x 48"										48"	60"				
42" x 60"										60"	72"				
42" x 72"										72"	84"				
48" x 60"										60"	72"				
48" x 72"										72"	84"				

Deck Style 1

Flush Deck & Frame

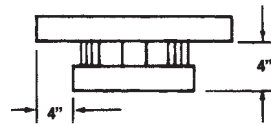
Important:
Platform protection in lieu of toe clearance or tapered toe guard must be provided by user



Deck Style 2

Toe Clearance

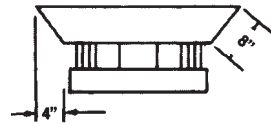
Deck must be 8" wider and longer than frame



Deck Style 3

Tapered Toe Guard

Units with 12" or more lowered height, decks must be 8" wider and longer than frame



CONSULT FACTORY

¹Additional vertical travel available.

^{*}All models available with wider and longer decks up to next available size. All models available with smaller decks down to frame size.

^{**}Capacities are for evenly distributed loads. Single axle rolling load capacity is **80%** of rated capacity across the ends and **50%** of rated capacity across the sides.

NOTE: Self-contained 1 HP - 3 HP power packs require a minimum frame size. Consult factory before quoting.

For Metric kg divide lb by 2.2 - For mm multiply inches by 25.4

Application Form

DATE: _____ DISTRIBUTOR: _____

SALESPERSON: _____ TEL: _____ FAX: _____

END USER: _____ TYPE OF INDUSTRY: _____

PRODUCT BEING HANDLED: _____

WIDTH: _____ LENGTH: _____

HEIGHT: _____ WEIGHT: _____

LOAD DISTRIBUTION: Even Other _____

HOW IS LIFT LOADED: Over End Side Raised Lowered

HOW IS LIFT OFF LOADED: Over End Side Raised Lowered

LIFT TABLE CAPACITY: _____

PLATFORM SIZE: _____ W x _____ L

PIT INSTALLED: Yes (toe protection required) No (floor mount)

LOWERED HEIGHT (A): _____ RAISED HEIGHT (C) : _____

TOTAL TRAVEL (B): _____ LIMIT SWITCH: Yes Up Down

LIFT SPEED: With Load _____ Without Load _____

OR TRAVEL TIME UP (SEC): _____ DOWN (SEC): _____

CYCLES: _____ Per hour Per Day Per Week Intermittent

CONTROLS: NEMA Class _____ Remote Push Button Foot

Other (specify) _____

POWER SOURCE: Voltage _____ POWER PACK: Remote Internal

DECK DESIGN: Style 1 2 3 Consult relevant product charts, previous page

Smooth Deck Diamond Tread Handrails Where _____

Turntable Size _____ Tilt Top Degrees _____ Conveyor

SAFETY FEATURES: Electric Trip Bars Bevel Toe Guard

Bellow Skirting Other (specify) _____

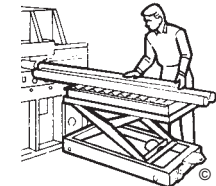
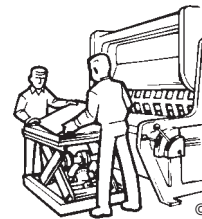
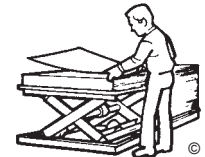
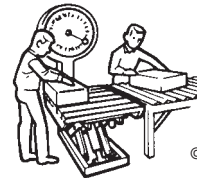
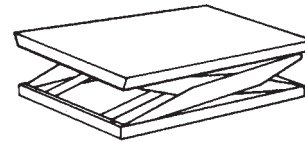
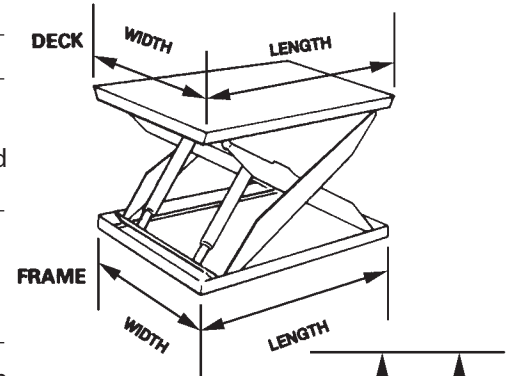
PORTABLE: Yes Describe _____

OTHER APPLICATION DETAILS: _____

INQUIRY QUANTITY: _____ DELIVERY REQUIREMENT: _____

INQUIRY TYPE: Budget Current consideration

COMPETITION: _____



LONDON, Ontario
 2390 Scanlan Street
 London, ON N5W 6G8
 Phone: 519-452-7770
 Email: info@liftdepot.com

WINDSOR, Ontario
 2-5900 Rhodes Drive
 Windsor, ON N8N 2M1
 Phone: 519-988-0006
 Email: info@liftdepot.com

STRATFORD, Ontario
 557 Lorne Ave. East
 Stratford, ON N5A 6S4
 Phone: 519-273-7664
 Email: info@liftdepot.com

CAMBRIDGE, Ontario
 45 Barnes Road
 Cambridge, ON N3H 4R7
 Phone: 519-653-4713
 Email: info@liftdepot.com

WWW.LIFTDEPOT.COM