

## XPS

An ergonomic alternative to manual lifting, intermediate-duty stacking and pallet positioning applications.

### CAPACITY

- 2200 lb (1000 kg) at 24" (610 mm) load center

### LIFT HEIGHTS

- 63" (1600 mm)
- 98" (2489 mm)
- 118" (2997 mm)

### OPERATION/CONTROLS

- Up/Down lever control mounted on dash
- Operator protection screen
- Excellent forward visibility and pallet handling
- Dual push handles mounted at comfort height level on mast
- Ergonomic spring-loaded steering handle with comfort grip

### POWER/HYDRAULIC

- 12 Volt powered lift system, manually propelled
- 12 Volt minimum maintenance deep cycle battery and built-in charger, for 110/1/60 plug-in
- Flow control valve at base of cylinder to regulate lowering speed
- On/Off key switch
- Battery gauge

### FORKS/CHASSIS

- 42" (1067 mm) long forged forks, 31.5" (800 mm) OD adjustment on pin style carriage
- Straddle legs adjust to three positions for varying pallet sizes
- Channel mast fitted with heavy-duty roller bearings and dual lift chains
- Easy access battery compartment panel
- Foot brake locks stacker from moving

### WHEELS

- 3" (76 mm) diameter polyurethane load wheels

### FORKS/CHASSIS

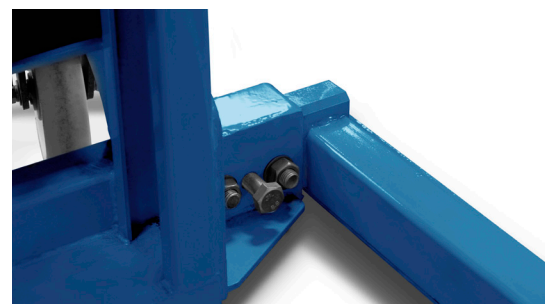
- 7" (178 mm) diameter nylon pivot steer wheels

### OPTIONAL EQUIPMENT

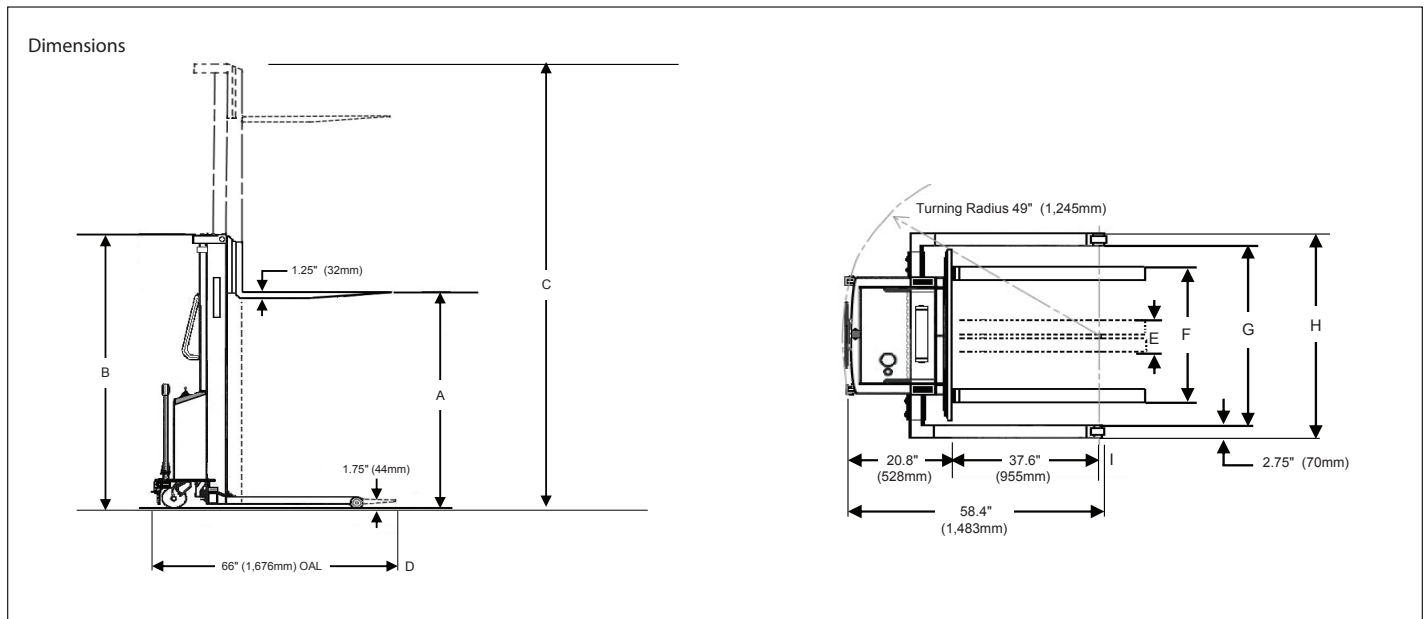
- Consult factory



Easy access controls



Adjustable straddles



Model		XPS-22			
Designation	Type	Manual Push Stacker			
	Capacity	2200 lb (997 kg)			
	Lift Height	A	63" (1600 mm)	98" (2489 mm)	118" (2997 mm)
	Load Center	24" (610 mm)			
Chassis	Lowered Mast	B	80" (2032 mm)	70" (1778 mm)	80" (2032 mm)
	Raised Mast Height	C	79.5" (2019 mm)	117" (2972 mm)	137" (3480 mm)
	Mast Stages		1	2	2
	Overall Length	D	66" (1676 mm)		
	Fork Length	42" (1067 mm)			
	Fork Width	E	3.5" (88.9 mm)		
	Adjustable Fork Width	F	7" (178 mm) – 31.5" (800 mm)		
	Lowered Fork Height	2" (51 mm)			
	Ground Clearance	1.6" (41 mm)			
	Straddles and Wheels	Steering Wheel Dia.	7.9" (201 mm)	7.1" (180 mm)	7.1" (180 mm)
Load Wheel Dia.		3.15" (80 mm)			
Adjustable Straddles ID		G	37" (940 mm), 41" (1041 mm), 45" (1143 mm), 49" (1245 mm)		
Adjustable Straddles OD		H	42.5" (1080 mm), 46.5" (1181 mm), 50.5" (1283 mm), 54.5" (1384 mm)		
Straddle Length		I	37.6" (955 mm)		
Performance	Lift Speed - Loaded	4.2 in. / sec	4.9 in. / sec	4.7 in. / sec	
	Lift Speed - Unloaded	4.2 in. / sec	4.9 in. / sec	4.7 in. / sec	
	Lowering Speed	Controlled			
	Voltage/Amp Hour/Charger Voltage V/AH/V	12	105	110	
	Service Weight	920 lb (417 kg)	1030 lb (467 kg)	1095 lb (497 kg)	

Performance may vary due to motor and system efficiency tolerances and represents nominal values under typical conditions.



**LONDON, Ontario**  
 2390 Scanlan Street  
 London, ON N5W 6G8  
 Phone: 519-452-7770  
 Email: info@liftdepot.com

**WINDSOR, Ontario**  
 2-5900 Rhodes Drive  
 Windsor, ON N8N 2M1  
 Phone: 519-988-0006  
 Email: info@liftdepot.com

**STRATFORD, Ontario**  
 557 Lorne Ave. East  
 Stratford, ON N5A 6S4  
 Phone: 519-273-7664  
 Email: info@liftdepot.com

**CAMBRIDGE, Ontario**  
 45 Barnes Road  
 Cambridge, ON N3H 4R7  
 Phone: 519-653-4713  
 Email: info@liftdepot.com